

INTEGRATED DEVELOPMENT PROJECT- ASHA KIRAN SOCIETY

(This is a Summary Statement of AKS Integrated Development Project to see the Holistic transformation of communities in Lamtaput Block)

INTRODUCTION:

From 1991 Asha Kiran has been involved in development projects in the Lamtaput Block with the aim of holistic transformation. Our areas of intervention for the different components were carried out based on availability of staff, with diverse strategies. Over the years, integration of our efforts did not reach the standards we would have expected, due to various reasons. As a result the impact on the communities were sectoral. In this context, Asha Kiran Society perceived the need of integrated development projects, that there would be a sustainable holistic impact on the communities.

In August 2005, AKS project planners and implementers of all units participated in the RBM (Results Based Management programme Planning) workshop facilitated by SIL consultant Georgetta MacDonald. During the workshop, a dream plan emerged as VISION 2020. AKS is planning to facilitate similar kind of RBM workshop for the key Community members from Lamtaput representing various walks of life, to have a long-term strategic plan.

In the wake of partnerships from agencies like MCC & EFICOR coming to a close, the Society has done a baseline survey in 28 villages and 15 of those villages are selected for the IDP. AKS is looking forward to start this venture with the like-minded partner agencies. Herewith we present “Vision 2020”, with 3 years short-term plan (April 2006-March 2009) focusing on 15 villages as well as a long-term plan (2006-2020) for the Block.

LONG TERM IMPACT STATEMENT- Vision 2020

The communities of Lamtaput and Khairput Blocks, with a sense of cultural heritage, identity and self-worth, dependant on God and each other, are working together towards sustainable transformation in the areas of physical and spiritual well being, socio economic and educational status, and good stewardship of natural resources provided by God.

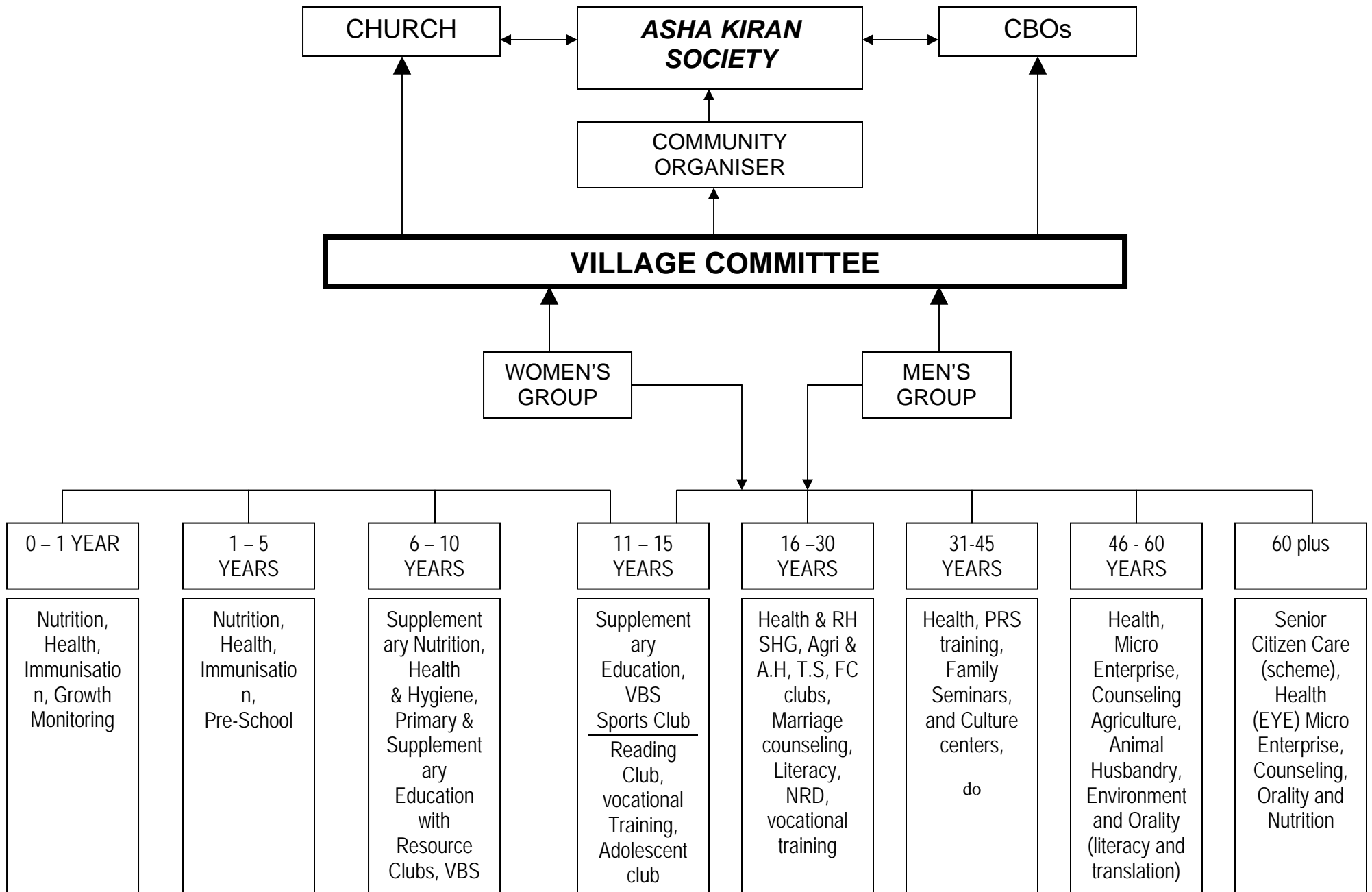
AREAS OF INTERVENTION:

1. **Education** – multi lingual & supplementary education
2. **Literacy & language development**
3. **Community health** – reproductive child health, preventive & curative health.
4. **Community development** – community organisation & capacity building.
5. **Natural resource development** – improve soil health & production of food, fodder & fuel.

Special Features:

- *Long term vision on Community Based Organisations & Cooperatives at the Block level*
- *Focus on Capacity building of Village Committees, Panchayat Raj and CBOs*
- *Enablement of Different age & gender groups in Agriculture, Literacy, Education, Socio-economic and Health for Holistic development*
- *Community participation at different levels of planning and implementation of the programme.*
- *Language Development and documentation of cultural heritage*
- *Adult Literacy Programme through non-print media for Oral learners*
- *Translation of Scriptures, and Scripture in use, in the vernacular.*
- *Multi Lingual Education programme for Pre- School and Primary School*
- *Supplementary Education for school going village children*
- *Vocational Training & Micro Enterprise for local youths*
- *Developing Health Posts at the cluster levels*
- *Nutrition Rehabilitation Programme for children below 5 years old.*
- *Implementation of Sloping Agriculture Land Technology (SALT) and Nutrition Garden*
- *Emphasis on Conflict Resolution & Peacebuilding in the communities.*

STRATEGY FOR VILLAGE LEVEL INTEGRATED DEVELOPMENT PROJECT



TIME FRAME FOR INTEGRATED DEVELOPMENT PROJECT

ACTIVITIES	2006-2009	2009-2012	2012-2015	2015-2018	2018-2021
Village Committees	Formation of 15 Village Committees	Formation of 15 Village Committees	Formation of 15 Village Committees	Formation of 15 Village Committees	Formation of 15 Village Committees
Capacity Building	---	Capacity Building of 15 VCs	Capacity Building of 15 VCs	Capacity Building of 15 VCs	Capacity Building of 15 VCs
Co-operatives	---	---	Formation of Co-operatives	Formation of Co-operatives	Formation of Co-operatives
Age and Gender Groups (11-15, 16-30, 31-45, 46-60, 60 +)	Holistic Learning in 4 villages – <i>n</i> number of groups	Holistic Learning in 5 villages – <i>n</i> number of groups	Holistic Learning in 6 villages – <i>n</i> number of groups	---	---
Agriculture	40 Lead Farmers	50 Lead Farmers	60 Lead Farmers	---	---
Education	Preschool & Supplementary Education- 3 villages	Preschool & Supplementary Education- 4 villages	Preschool & Supplementary Education- 5 villages	Preschool & Supplementary Education- 3 villages	---
Nutrition Rehabilitation Programme	4 villages	5 villages	6 villages	---	---
Sustainability	---	---	---	---	Withdrawal plan